

DETTAGLI

- Foderata
- 3 bottoni
- 2 spacchi dietro

TAGLIE

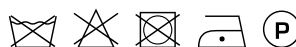
42 ÷ 62
Slim Fit

COLORE

119 Grigio medio
000 Nero
004 Blu

TESSUTO

53% poliestere
43% lana
4% elasthan
173 g / m²



Le misure indicate si riferiscono alle taglie **S** per i capi femminili, **L** per i capi maschili. Per i capi a taglia unica le misure indicate sono effettive.

COLORI DISPONIBILI



119 Grigio medio



000 Nero



004 Blu

TABELLE TAGLIE
E CORRISPONDENZE

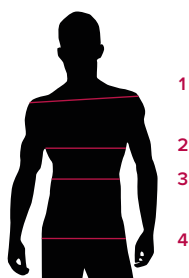


TABELLA ST-C1 SLIM FIT

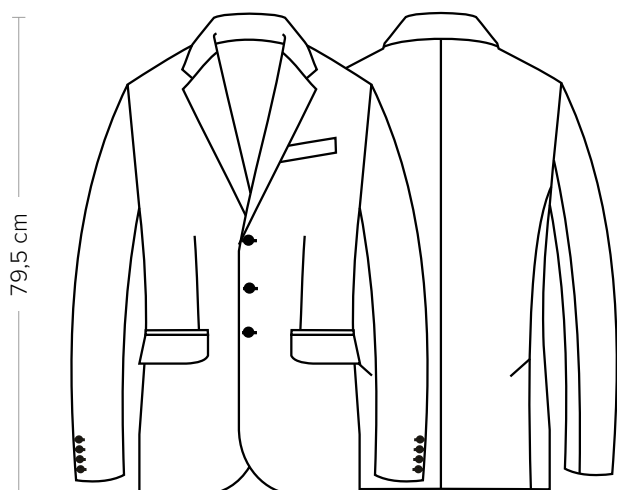
TAGLIA AMERICANA			XS	S	M	L	XL	XXL	3XL				
TAGLIA ITALIANA	40	42	44	46	48	50	52	54	56	58	60	62	64
1 SPALLE	39,00	40,00	41,00	42,00	43,00	44,00	45,00	47,00	46,00	48,00	49,00	50,00	51,00
2 TORACE	84-89	89-94	94-98	98-102	102-106	106-110	110-114	114-118	118-122	122-126	126-130	130-134	134-138
3 VITA	75-81	82-86	86-90	90-94	94-98	98-102	102-106	106-112	112-118	118-124	124-128	128-132	132-136

GUIDA ALLE TAGLIE **1)** Prendere le misure anatomiche (corpo con abbigliamento intimo) senza stringere mantenendo ben teso il metro. **Nota:** nel caso vogliate indossare dei camici già con dell'abbigliamento sotto prendete le misure già abbiagliati. **2)** Nel caso tra le misure prese vi fosse una misura a cavallo fra 2 taglie vi consigliamo di prendere quella più grande. **3)** Le misure della tabella sono espresse in centimetri.

DAMIANO

ITEM CODE
12P01C230

Giblor's
italian work/life specialist



DETAILS

- Lined
- 3 buttons
- 2 rear vents

SIZES

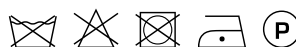
42 ÷ 62
Slim Fit

COLOURS

119 Medium grey
000 Black
004 Blue

FABRIC

53% polyester
43% wool
4% elastane
173 g / m²



The measures indicated refer to sizes **S** for women, **L** for men. For one-size-fits-all garments, the measurements indicated are effective.

AVAILABLE COLOURS



119 Medium grey



000 Black



004 Blue

SIZE TABLES
AND CORRESPONDENCES

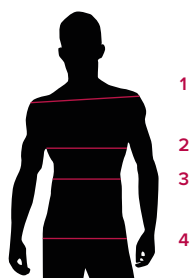


TABLE ST-C1		SLIM FIT											
AMERICAN SIZE			XS	S	M	L	XL	XXL	3XL				
ITALIAN SIZE	40	42	44	46	48	50	52	54	56	58	60	62	64
1 SHOULDERS	39,00	40,00	41,00	42,00	43,00	44,00	45,00	47,00	46,00	48,00	49,00	50,00	51,00
2 CHEST	84-89	89-94	94-98	98-102	102-106	106-110	110-114	114-118	118-122	122-126	126-130	130-134	134-138
3 WAIST	75-81	82-86	86-90	90-94	94-98	98-102	102-106	106-112	112-118	118-124	124-128	128-132	132-136

SIZE GUIDE 1) Take the anatomical measurements (body with underwear) without tightening, keeping the measuring tape taut. Note: in case you want to wear of the gowns already with the clothing underneath take the measurements already dressed. **2)** If there is a measure between 2 sizes between the measurements taken, we advise you to take the bigger one. **3)** The measurements in the table are expressed in centimeters.